

Farewell, Foundation Executive Director

After more than 11 years of outstanding service as Executive Director of the Gamma Phi Beta Foundation, Bonnie Payne (Denver) has announced she will retire in July of this year.



Bonnie joined the Foundation as executive director in October 2000. During her tenure, the Foundation's assets grew from \$5 million to nearly \$9 million.

"I consider my work with the Foundation to be the most important and rewarding of my career," Bonnie says.

The Gamma Phi Beta Foundation will immediately begin a search process for an Executive Director. Information about applying for this position is posted at www.gammaphibeta.org in the *Jobs* area, located on the bottom of each page of the site.

Gamma Phi Beta is ON THE GO!



Our Sorority is growing strong!

Gamma Phi Beta will make an extension presentation and vie for spots at both the University of Central Florida in Orlando and the University of Cincinnati in Ohio.

Gamma Phi Beta will present to the Central Florida panel on May 3 and to the Cincinnati panel on May 11. For more information, contact extension@gammaphibeta.org and watch for updates to our official Facebook page.

Fresh ΓΦΒ Buzz in April!

What's the latest *buzz*?! Stay current with all the fresh happenings at ΓΦΒ by reading *The Buzz* and passing it on to your sisters.

Share your chapter's exciting *buzz*-worthy news with the Sorority! E-mail TheBuzz@gammaphibeta.org by **Wednesday, April 27** to be included in the next edition. Feel free to brag and show everyone how your chapter shines for Gamma Phi Beta!

Thank you, Gamma Phi Beta Volunteers!

Gamma Phi Beta has thrived over the past 137 years because of the selfless contributions of our incredible volunteers! From our founding, Gamma Phi Beta has relied on its membership to help advance the initiatives of the Sorority.

As we celebrate all of our volunteers and their untiring dedication during National Volunteer Appreciation Week, take a few minutes to sit back and enjoy a special video, created to highlight our amazing volunteers who make the Gamma Phi Beta world a truly wonderful one!

Watch the video at: www.youtube.com/watch?v=uaVAK_D6dVY

RLC Workshops Online!

Regional Leadership Conferences (RLC) have wrapped up and participating members learned a great deal about how to be leaders in their chapters!

To catch up on anything you might have missed or review what you learned, you can access all the documents from the workshops at www.gammaphibeta.org.

Once successfully logged in, look for the *RLC Workshops* page, a sub-page of the *Collegiate Resources* page (located under the *Collegians* tab).

Foundation Grants \$170,000 in Financial Aid!



The Foundation financial aid subcommittee met at International Headquarters recently to complete the applicant review process and select scholarship and fellowship award recipients.

Thanks to the generosity of our scholarship and fellowship donors, more than \$170,000 will be awarded to nearly 100 Gamma Phi Betas! Recipients will be notified in late April.



Recognized your sisters' accomplishments with "In Celebration" gifts. To distribute a gift, visit www.gammaphibeta.org/foundation-donations and choose "In Celebration" in the drop-down designation box.

Look for a Special Gift from Gamma Phi Beta!

Watch your mailbox - alumnae dues forms should arrive any day! But make sure to open them - the forms are accompanied by a unique Gamma Phi Beta twist and a special gift.

Remember to please pay your alumnae dues and enjoy the surprise! You can even pay your dues online at www.gammaphibeta.org/sorority/pay-alumnae-dues!



It's Time for Senior Celebration Packets

Alumnae, remember your seniors as they graduate this spring by providing them with a Gamma Phi Beta *Senior Celebration Packet*. The packet includes information on services, opportunities and benefits that Gamma Phi Beta offers to alumnae members.

Senior Celebration Packets are provided free of charge (shipping charges apply) and are available at www.gammaphibeta.org/sorority-products/alumnae-seniors.5.



Meet the Sorority's Newest Volunteer Leaders!

Gamma Phi Beta is proud to announce the following women have joined the Gamma Phi Beta volunteer team or have moved to a new position. We appreciate you!

Stephanie Gauchat Carriere (Arizona)
Sorority Director for Region 7 (effective May 1)

Elana Michele Huber (Syracuse)
Sorority Coordinator-Financial Management

Melanie A. Kelsey (Puget Sound)
Sorority Coordinator-Financial Management

Marie "Christy" Shafer (St. Louis)
Sorority Coordinator-Financial Management

Accolades

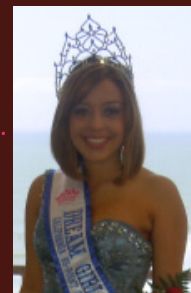
Congratulations to **Kristen Drvol, Niki Littlejohn, Erin Reynoldson** and **Alicia Walz** (all of Nebraska-Lincoln) for being honored as members of Mortar Board at the University of Nebraska-Lincoln. Way to go!

Just in time for Mother's Day - **Becki Steers Metzger** (Oregon State) was named *Outstanding Sorority House Director* at Oregon State University by the Corvallis Area Alumnae Panhellenic. Becki has been house director with Delta Gamma Sorority for 10 years - congratulations, Becki!

More exciting news - **Julianne Sicklesteel** (William & Mary) was selected as a member of Phi Beta Kappa, a historic honor society that celebrates and advocates excellence in the liberal arts and sciences. Keep up the good work, Julianne!

Congratulations to **Kim Covelli Snyder** (Syracuse) who recently found out she's a finalist in a prestigious romance writing contest! Her pen name is Kimberly Kincaid. Best of luck, Kim!

Kudos to **Jessica Aguirre** (California State-Fullerton), who won the California Hi-Point Champion for Dream Girls U.S.A. pageant! Jessica will represent California at nationals in Saint Louis.



It's Survey Time

Attention attendees of The Academy - don't forget to take the online Academy survey. Available now, the survey will only take a few minutes and will provide Gamma Phi Beta with feedback on the recent conference. Your thoughts, opinions and answers are greatly appreciated!



Find the survey at www.gammaphibeta.org on the home page in the *Events* section. We look forward to receiving your feedback!

Chapter Highlights

Recently installed, **Eta Delta Chapter** (Grand Valley State) won its very first Greek Week competition! The chapter is very excited and Gamma Phi Beta is proud of its members. Way to go!



Alpha Delta Chapter (Missouri) will celebrate its 90th anniversary with a fun-filled weekend in Columbia, Missouri, April 30 - May 1. The celebration will start at the chapter house and continue with many events and planned festivities. To attend, contact **Carol Stelmach** at bcstell@charter.net.

Gamma Phis know their cakes! Members of **Gamma Eta Chapter** (California State-Long Beach) took first place with their "churro cupcake" at Delta Chi Fraternity's *Cupcake Showdown*. Money raised benefited the V Foundation for Cancer Research.

The ladies of **Gamma Rho Chapter** (Wisconsin-Oshkosh), along with Beta Theta Pi Fraternity took second place in competitions at a Harry Potter-themed carnival.



Members of **Richmond Alumnae Chapter** assisted **Zeta Beta Chapter** (Virginia) with a very successful formal recruitment. They also enjoyed a flower-arranging class and a well-attended happy hour.

Spokane Alumnae Chapter hosted a scholarship brunch in January for the ladies of **Zeta Alpha Chapter** (Eastern Washington), who made the dean's list during fall quarter 2010. The chapter's house corporation board transitioned to Billhighway and purchased new wardrobes to update the house's closet room during spring break.

Celebrate Advisor Appreciation Month!

April is the National Panhellenic Conference's Advisor Appreciation Month!

There are SO many different ways to "say thanks!" to our amazing sisters who volunteer their time to make Gamma Phi Beta SHINE!

Try sending a heartfelt email, throwing a small surprise luncheon or featuring an advisor on your chapter website or Facebook page. How do you show your appreciation? Share your stories by emailing us at TheCrescent@gammaphibeta.org.

Deadlines

Collegians

Form 9/13 - Financial vice presidents need to complete Form 9/13 within seven days of Bid Day and send to International Headquarters (IH).

If a chapter is not recruiting new members but is planning on initiating deferred members from previous semesters, notify **Collegiate Coordinator Jill Gunjevic** at jgunjevic@gammaphibeta.org.

Alumnae

May 1

Form 27 - Presidents Report due to IH. Must be postmarked by May 1.

June 1

Form 60 - Carnation Award form due to IH. Must be postmarked by June 1, 2011.

Both forms can be found online at www.gammaphibeta.org on the homepage.

House Corporation Board

May 15

Form 34 - HCB Quarterly Statement of Receipts and Disbursements for February - April due to IH.

Attention: Chapters, alumnae and house corporation boards

Please make sure to send a copy of your 990 tax return for fiscal year August 1, 2009, through July 31, 2010, to IH as soon as possible.

The deadline for filing with the IRS was December 15, 2010. If you have filed for an extension, please send IH a copy.